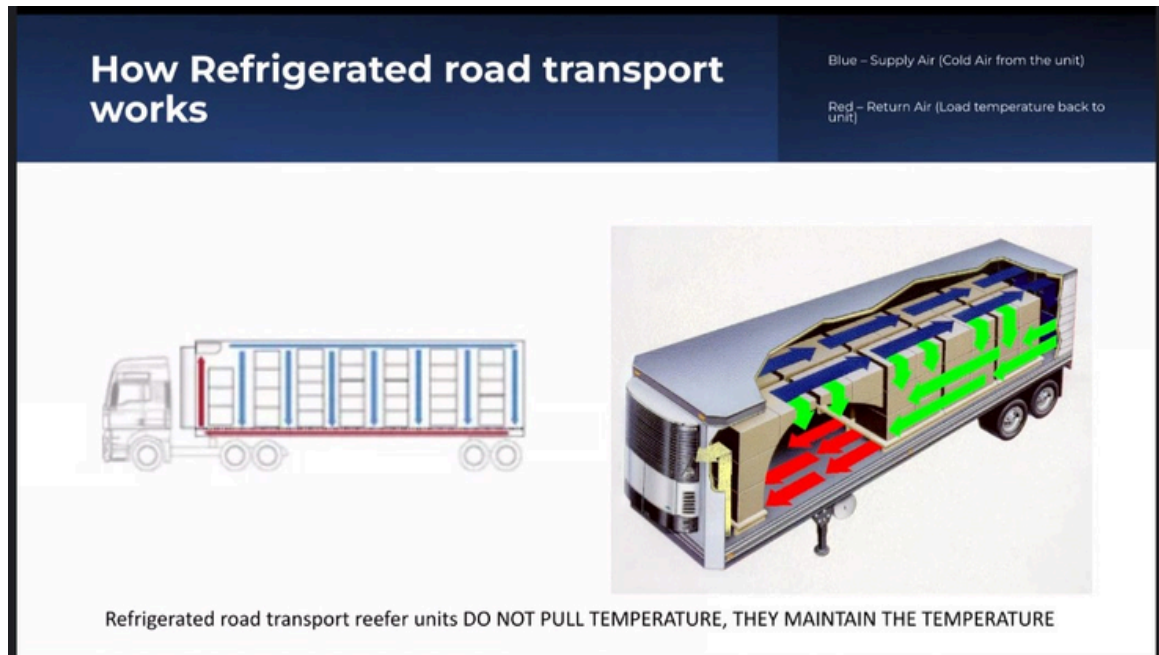


**Direct Connection to Refrigerated  
Reefer Unit Data**

**Carrier & Thermo King**

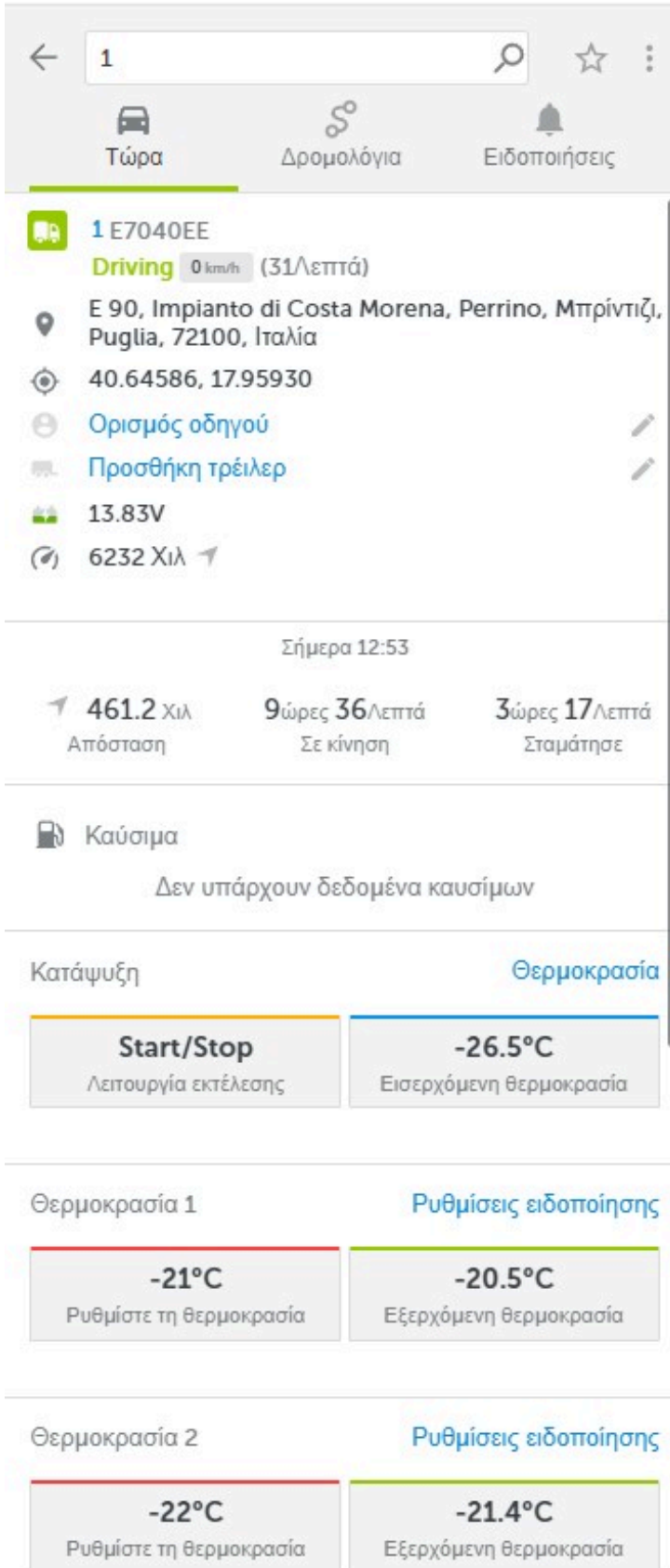


**Alfakom** offers the most specialized solution and maximum accuracy, directly connecting our device to the refrigerated unit, receiving Live Temperature Data, Setpoint, Carrier operating hours, electricity operating hours and much more!



## What We Offer:

- Ability to customize measurement frequency according to your needs.
- Ability to receive notifications immediately via email.
- Ability to receive mobile notifications if the temperature exceeds the predefined limits.
- User-friendly fleet management interface with real-time measurement monitoring capabilities.
- Access to the history of temperature data.
- A wide range of customized reports tailored to your needs.



The screenshot displays the ALFAKOM mobile application interface. At the top, there is a search bar with the number '1' and navigation icons. Below this, there are three main menu items: 'Τώρα' (Now), 'Δρομολόγια' (Routes), and 'Ειδοποιήσεις' (Notifications). The main content area shows vehicle information for unit '1 E7040EE', including its status 'Driving' at 0 km/h, location 'E 90, Impianto di Costa Morena, Perrino, Μπρίνιτσι, Puglia, 72100, Ιταλία', and coordinates. It also lists various settings like driver identification, trailer addition, and battery voltage (13.83V). A summary section for 'Σήμερα 12:53' shows a distance of 461.2 km, 9 hours 36 minutes of movement, and 3 hours 17 minutes of stoppage. The 'Καύσιμα' (Fuel) section indicates no data is available. The 'Κατάψυξη' (Refrigeration) section shows two temperature units: 'Start/Stop' at -26.5°C and 'Thermocouple 1' at -21°C. The 'Thermocouple 2' section shows a setpoint of -22°C and a current reading of -21.4°C.

- Live Run Mode (Start - Stop, Continuous)
- Live Supply Temperature
- Setpoint 1 & 2
- Live Output Temperatures
- Refrigerated Unit Operating Hours
- Electricity Operating Hours

## Route Temperature

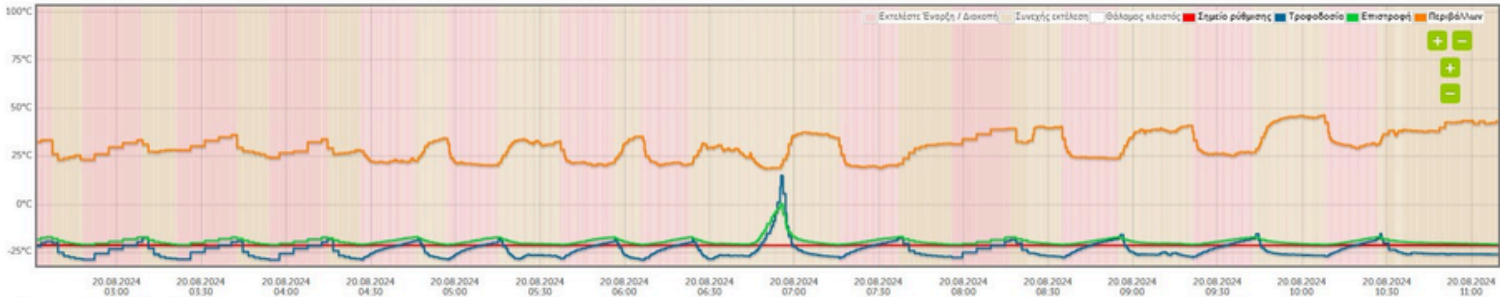
In our Platform you can see for any route and any time the temperature of your refrigerated unit directly from the CAN of the refrigeration chamber.



## Θερμοκρασία αναφοράς

Όχημα:  Ημερομηνία:  Γράφημα θερμοκρασίας:  Ελάχιστο διάστημα δεδομένων:  Αυστηρό διάστημα:  Απόφυξη:

## 1 E7040EE 1ος θάλαμος



In our Platform you can create a report with all the details of the refrigeration chamber on any date. In addition, we can download these reports in PDF and EXCEL.

## Notifications

Setting

Λειτουργία εκτέλεσης:

Σημείο ρύθμισης θερμοκρασίας:

Ψύξη φορτίου

Μέγιστη τιμή πάνω από το σημείο ρύθμισης:  -19°C

Μέγιστη τιμή κάτω από το σημείο ρύθμισης:  -23°C

Ειδοποίηση ενεργή από:  Έως:

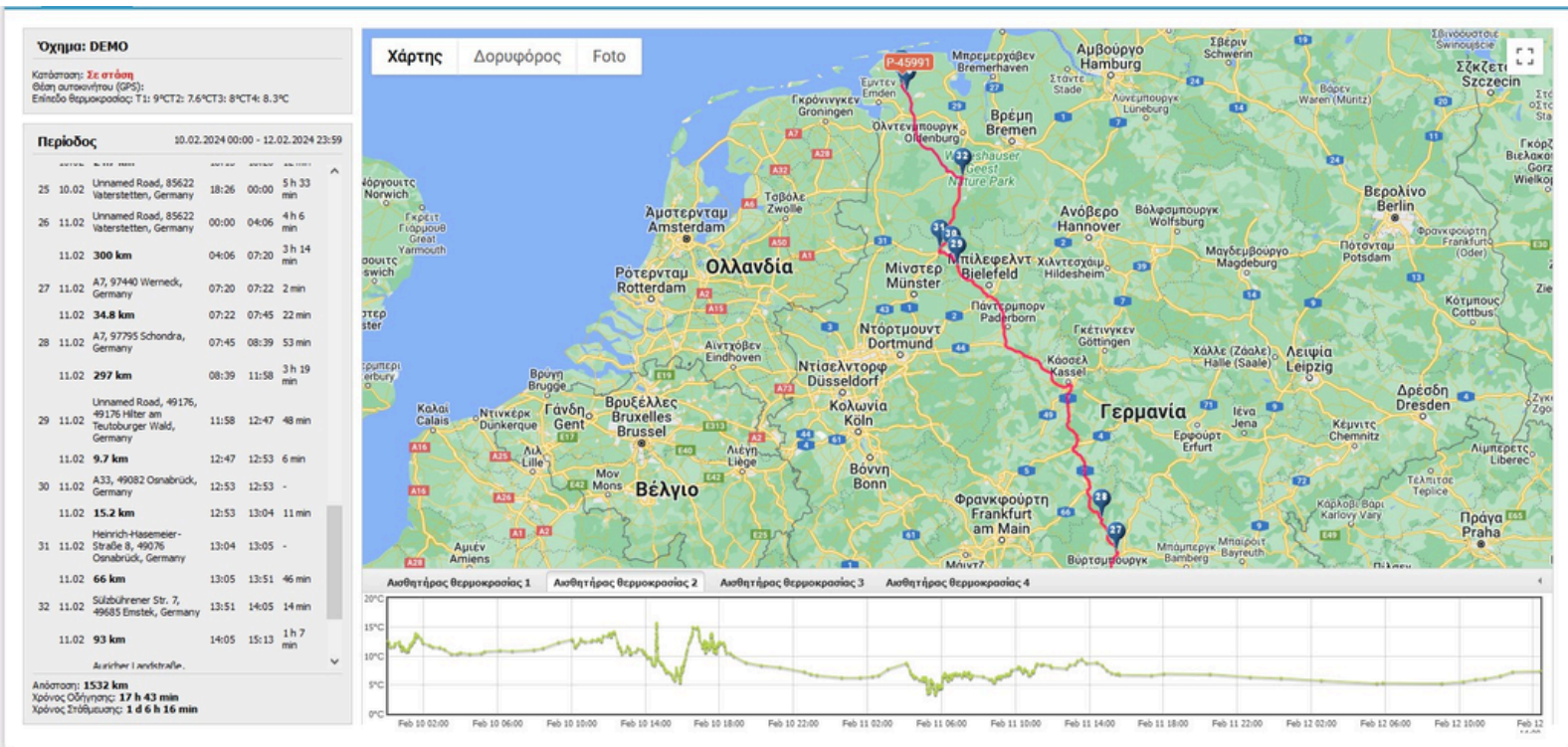
Αποστολή Ειδοποίησης  
 Στο e-mail: info@alfakom.gr  
 Αναδυόμενο παράθυρο (WEB)

Πρόσθετα e-mail

Όνομα φορτίου:

Receive a notification (by email / push notification on mobile phone or computer) whenever the temperature of your refrigeration unit has exceeded a certain limit.

Alfakom offers the capability for owners of refrigerated units to send their customers a link with location and temperature details, ensuring both the taken route and the temperature at all points along the journey, including total kilometers and stops.



Link to location with temperatures from Alfakom's platform.

# Compatible Refrigerated Reefer Units



Carrier	INTAKE/RETURN TEMP	ACTIVE HOURS	ENGINE/WORK HOURS	FUEL LEVEL (IF SENSOR PRESENT)	DIAGNOSTIC CODES	RPM	ENGINE TEMP	AUX TEMP	WORK MODE	DTC CLEAR	REMOTE CONTROL	HISTORY DOWNLOAD
Supra Sx	•	•	•		•			•	•	•	•	•
Supra 750	•	•	•		•			•	•	•	•	•
Supra 850	•	•	•		•			•	•	•	•	•
Supra 950	•	•	•		•			•	•	•	•	•
Vector	•	•	•	•	•	•	•	•	•	•	•	•
X2	•	•	•	•	•	•	•	•	•	•	•	•
X4	•	•	•	•	•	•	•	•	•	•	•	•
HE xxxx	•	•	•	•	•	•	•	•	•	•	•	•
M600	•	•										
X series	•	•										
Maxima-xxxx	•	•	•	•	•	•	•	•	•	•	•	•
<b>Thermo king</b>												
Smartreefer 2	•	•	•	•	•	•	•	•	•	•	•	•
Smartreefer 3	•	•	•	•	•	•	•	•	•	•	•	•
Smartreefer 4	•	•	•	•	•	•	•	•	•	•	•	•
Precedent S-X	•	•	•	•	•	•	•	•	•	•	•	•
SLXi	•	•	•	•	•	•	•	•	•	•	•	•
Precedent C-x	•	•	•	•	•	•	•	•	•	•	•	•
T-xx00R	•	•	•		•			•		•		•
T-x0 series	•	•	•		•			•		•		•